

Remote Instrument Operation

Topics

- Enhancing Demonstrations in the Classroom
- Tool for Collaboration
- Remote Instrument Operation
- Issues/Problems

Levels of Access

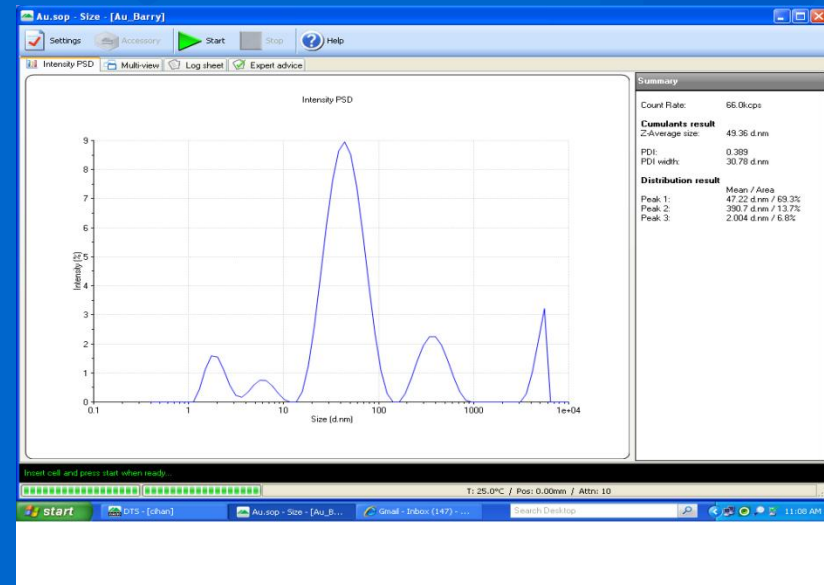
- **Passive**
 - Remote users watch live experiment
 - Little or no control of experiment
 - Useful for teaching large classes
 - Great tool for collaboration – especially for users with no training
- **Active**
 - Remote users control experiment
 - much better than “watching” for students or collaborators
 - Gives remote access to users who cannot travel

A tool for teaching



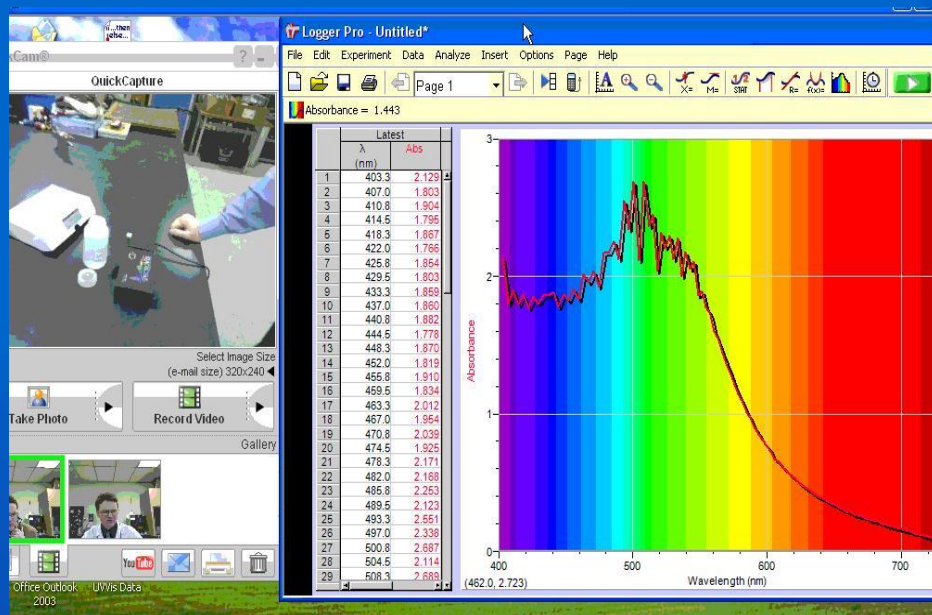
- **Brings the University to the classroom**
 - Most school budgets do not include money for field trips
- **Watching a live experiment, or better yet, running an instrument is very exciting and memorable**

Credits:
David Luzzi
(Northeastern University-formerly U Penn)
Barry Stein
(Ben Franklin Technology Partners)
James Murray
(Immaculata University)

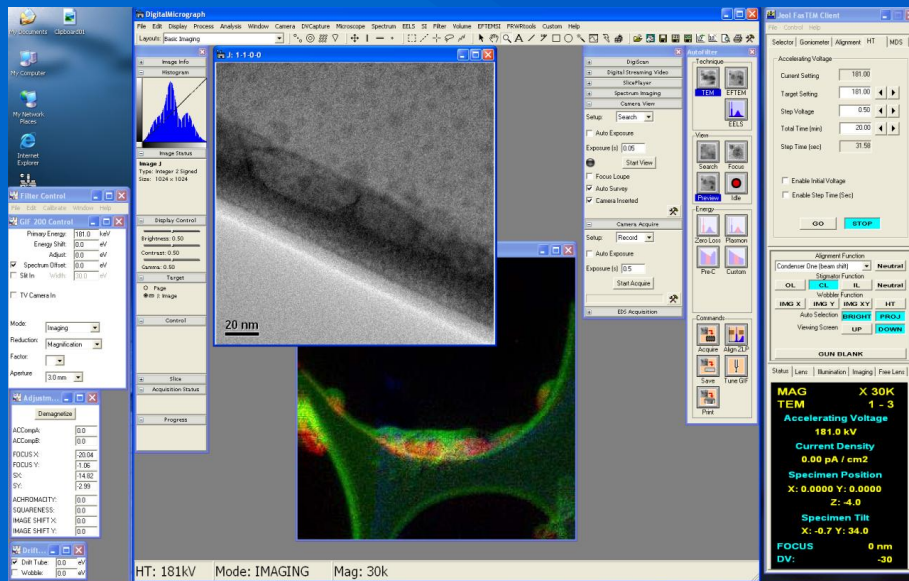


Remote Teaching

- Use desktop sharing (UltraVNC)
- Connect via webcams
- Bring a few students to the lab
 - Makes the demo seem more real and the students can later tell the class about their experience

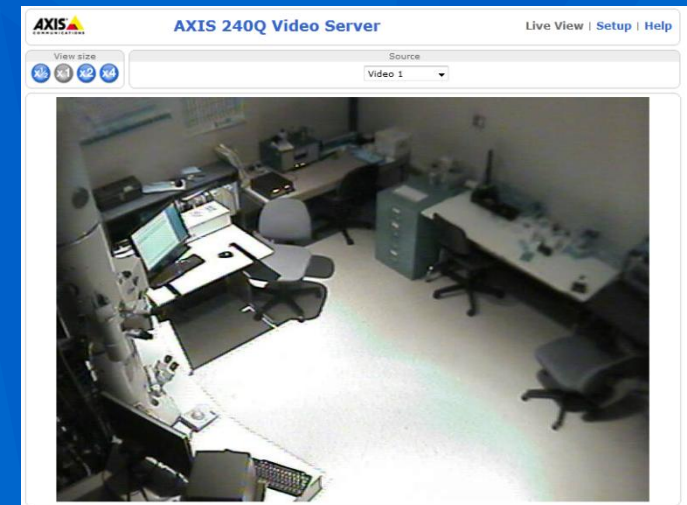


Facilitating Collaborations



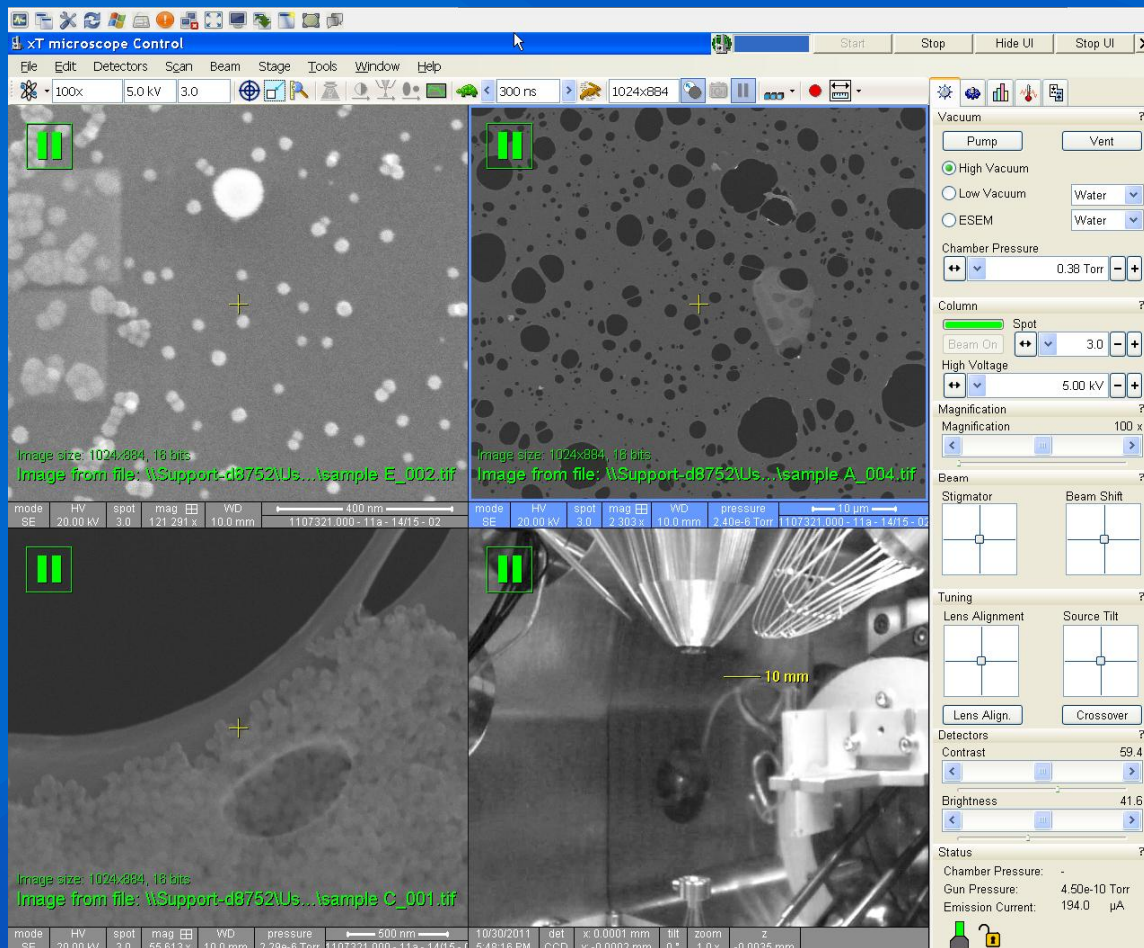
- Bring a collaborator into a microscopy session.

- Great tool for industry users
 - Allows visiting industry users to show results to group members at their facility.

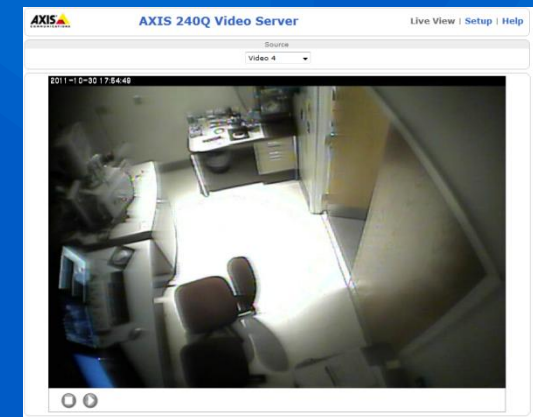


Examples -

Scanning Electron Microscopy



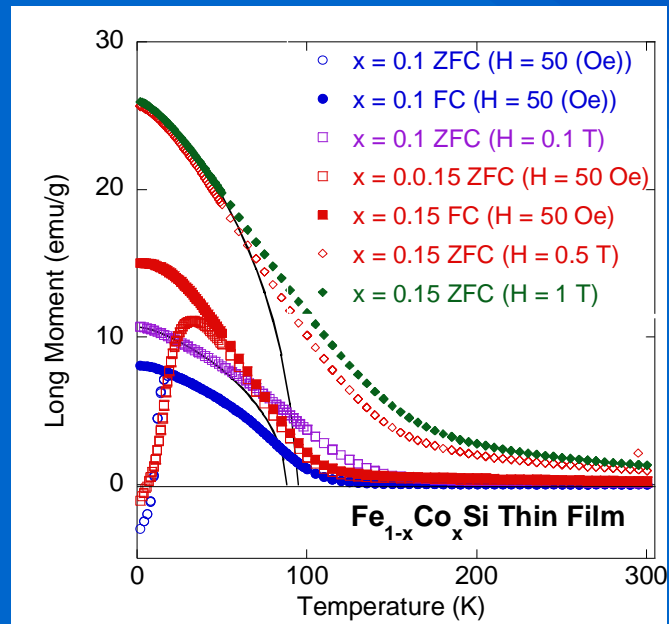
- Stage is software driven
- Nearly complete control of microscope



Examples -

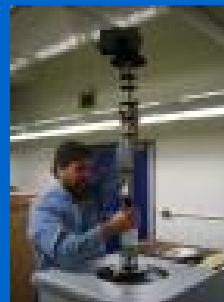
Properties Measurement Shared Equipment Facility

- Prof. Jay Kakawa



Remotely acquired SQUID data taken by remote users at NUL in Africa.

- Once the experiment is setup, remote operation is ideal.



Successful off-site users:

- National University of Lesotho
- University of Pretoria

Issues with Remote Access

- **Staff member is still involved**
 - Sample loading
 - Adjustment of non-software driven components
- **Damage to instruments**
 - Safe guards and interlocks vary by instrument
- **Training**
 - For Active remote instrument sessions, the user must receive sufficient training
- **Resistance from OEM's and staff members**